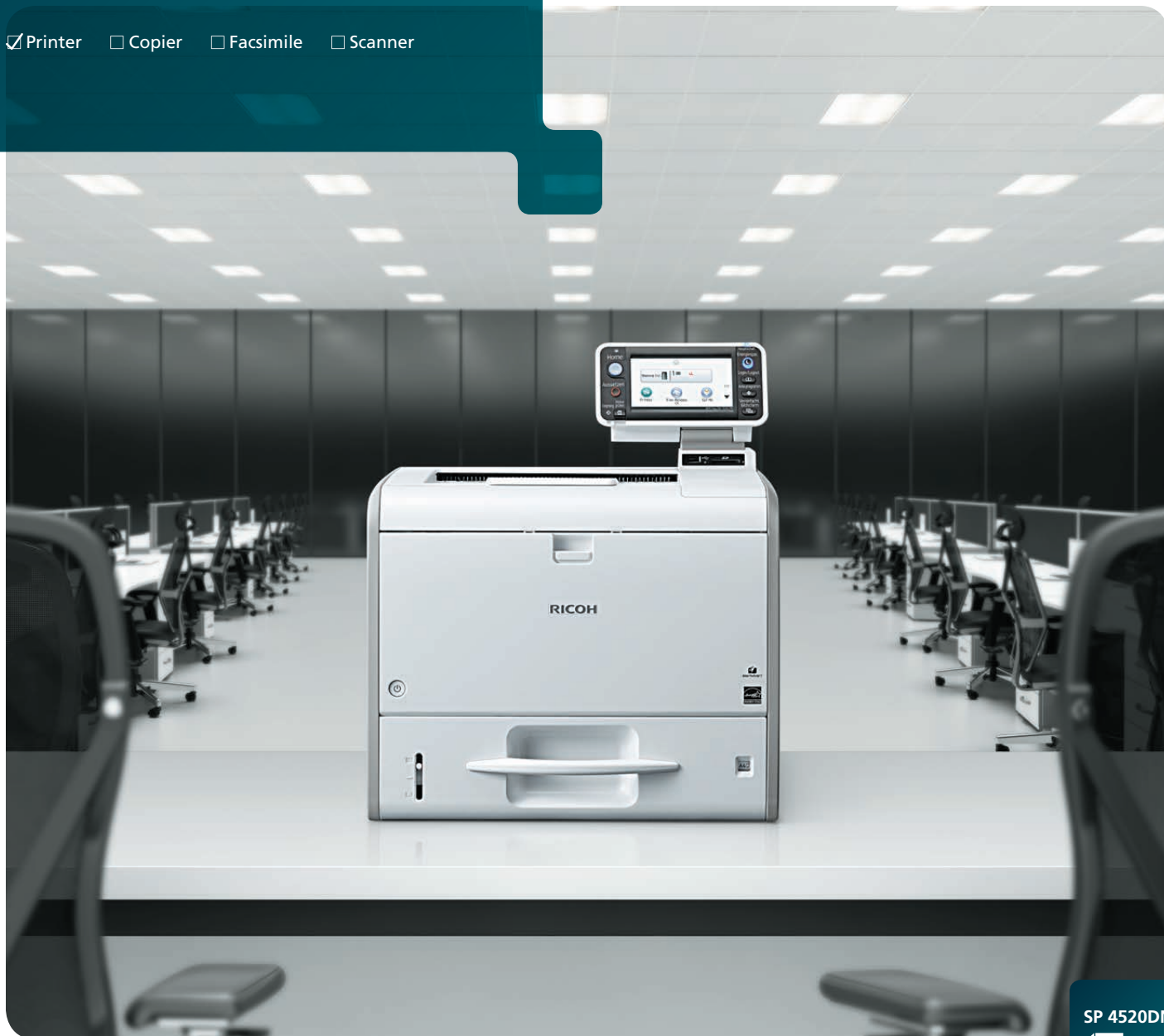


Desktop B&W Printer

RICOH SP 4520DN

☒ Printer ☐ Copier ☐ Facsimile ☐ Scanner

RICOH
imagine. change.



SP 4520DN

42 ppm
monochrome

Fast, high-quality printing that fits your style and budget

You're ready to work at a moment's notice. You work quickly. And, your efforts make the workday easier for your coworkers. Shouldn't you expect the same from your printer? Choose the RICOH® SP 4520DN — the latest in our long line of innovative devices proven to simplify the way you work by moving information quickly and economically. Integrate it into your small workgroup or office and print high-quality black-and-white documents at high speeds without compromising security. Or, add the compact, feature-rich printer as part of a Ricoh Managed Document Services (MDS) strategy and see just how much time and money it can save for your organization.

Complete more jobs quickly

You worked hard on your latest big idea. There's no reason you should have to wait to see it. Recovery from sleep mode is only 10 seconds, and first-print times are less than seven seconds, so you can print up to 42 pages per minute at 1,200 dpi resolution in moments. Add additional paper feed units without expanding your footprint and increase paper capacity to 1,600 sheets for longer, uninterrupted runs. Take advantage of a robust controller and powerful processor to manage more jobs from multiple users simultaneously. In the back office, the Ricoh SP 4520DN ably handles host printing applications like UNIX, SAP R/3 and IPDS.



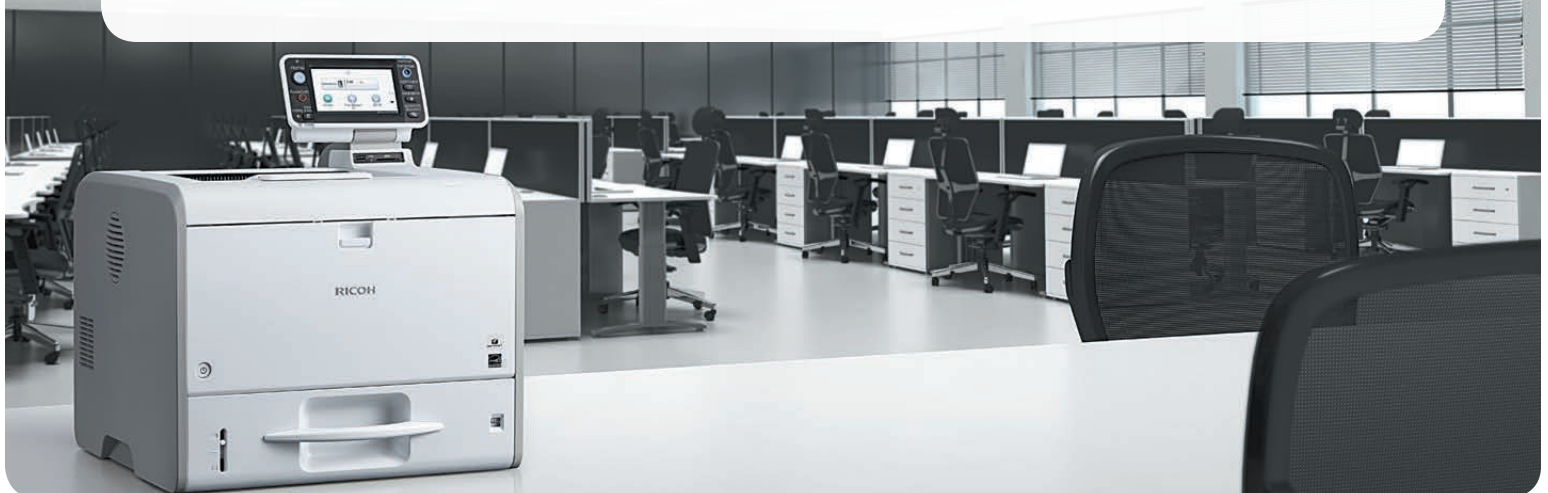
Add a personal touch to your workflow

Printing shouldn't be complicated. Customize your home screen and add shortcuts to frequently used tasks with the intuitive, tiltable 4.3" color touch panel on the Ricoh SP 4520DN. You can also use it to check system status at a glance or to navigate between key functions and projects. Add the optional Web browser to the printer to access Web pages directly from the operation panel. Then, print them directly from the device for faster turnarounds.



Print from your mobile device

Smartphones and tablets have quickly become a big part of our everyday lives — at home and at work. More workers are performing office tasks directly from their phones and tablets for incredible convenience in the workplace. Wouldn't it be nice to print from them, too? Use the Ricoh Smart Device Print&Scan app and print directly from your Apple® iPhone®, iPad or Android device when connected to an office network — without installing print drivers. You can also transport files on a USB/SD card and print it from the Ricoh SP 4520DN.



Discover the value of reliable, affordable black-and-white printing

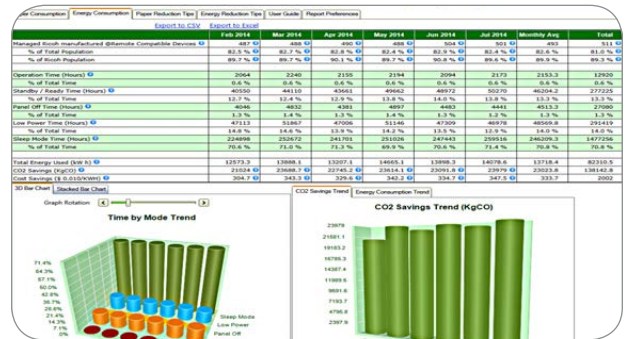
Minimize risks

Control what gets printed — and who prints it. Incorporate user authentication directly at the Ricoh SP 4520DN, so sent documents are released from the optional Hard Disk Drive only after the user enters a password at the touch panel. Or, add the optional card reader and use ID cards to release print jobs. Thwart other nefarious threats with IP Address filtering, 128-bit encryption, HDD Data Encryption and DataOverwriteSecurity System (DOSS) to encrypt or overwrite data on the Hard Disk Drive. Assign up to 1,000 user codes to track users and types of print jobs. You can even set quotas for specific users, groups or types of jobs to encourage more economical printing.



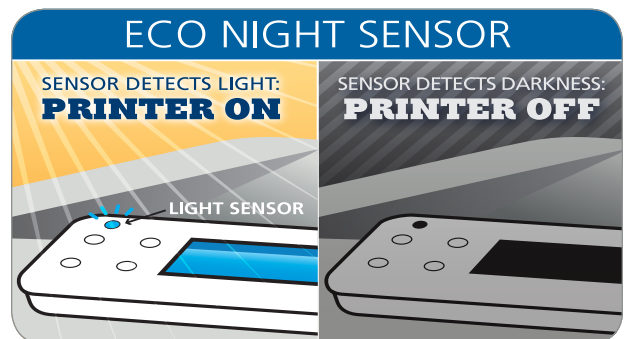
Monitor operations

Efficiency means something different for different work groups. Determine what it means to yours. See how the Ricoh SP 4520DN measures up to other printers in your fleet while also checking paper, toner levels and more with Ricoh Device Manager NX. Use Ricoh Web Image Monitor to manage print queues and change settings. Or, monitor detailed device usage data with easy-to-use Ricoh @Remote and find potential problems before they compromise print performance.



Embrace environmental responsibility

You may feel like you have enough responsibilities at work. If so, why not let us help you conserve energy resources and protect the environment? The Ricoh SP 4520DN comes standard with double-sided printing to reduce paper use. Activate the ECO-Night Sensor and the printer shuts down for the night when you do. Or, you can program the printer to shut down at designated times to reduce energy consumption when the office is slower or closed. Plus, the device meets EPEAT® Silver* criteria — a global environmental rating system for electronic products — and is certified with the latest ENERGY STAR™ specifications. In addition, with Ricoh's toner cartridge/container recycling program, you can return all empty Ricoh branded toner containers and cartridges to our recycling vendor.



Simplify maintenance

You're seeking a reliable printer that can produce up to 10,000 images per month. With high-yield consumables and a host of remote administration controls, you can rest assured that your printer will always work when you need it most. Just as importantly, cost-per-page has been minimized too, so you can produce high-quality black-and-white documents with minimal interruption to maximize your investment.



*EPEAT Silver rating is applicable only in the USA.

Ricoh SP 4520DN

SYSTEM SPECIFICATIONS

Engine Specifications

SP 4520DN	Part # 407309
Configuration	Desktop
Technology	LED
Color/B&W	Black & White
Printing Process	Electro-photographic printing
Toner Type	Dry, single component
B&W Print Speed (Letter)	42 ppm
Maximum Monthly Volume	10,000 prints
Maximum Monthly Duty Cycle	150,000 prints
First Page Out Time	5 seconds
Warm-Up Time	17 seconds
Print Resolution	Up to 1200 x 1200 dpi
Standard Paper Capacity	1 x 500-Sheet Tray + 100-Sheet Bypass Tray
Maximum Paper Capacity	1,600 sheets
Standard Output Capacity	250 sheets
Supported Paper Sizes	Paper Tray: 3.94" x 5.82" – 8.5" x 14" (100 x 148 – 216 x 356 mm) Bypass Tray: 2.37" x 5.0" – 8.5" x 35.43" (60 x 127 – 216 x 900 mm)
Supported Paper Weights	All Trays: 14 – 43 lb. Bond/90 lb. Index (52 – 162 g/m ²) Duplex: 14-43 lb. Bond/90 lb. Index (52 – 162 g/m ²)
Supported Paper Types	Plain, Recycled, Thick, OHP (Transparency), Letterhead, Preprinted and Envelopes Automatic (standard)
Duplexing	573.2 W
Power Consumption (Operating)	Less than 1 W
Power Consumption (Sleep Mode)	1.752 kWh/week
Typical Electricity Consumption (TEC)	9.9 seconds
Recovery from Sleep Mode	120 V, 60Hz, 10A
Power Requirements	14.6" x 15.4" x 16.9" (370 x 392 x 427 mm)
Dimensions (WxDxH)	34.2 lbs. (15.5 kg)
Weight	Certified
ENERGY STAR	Silver
EPEAT	

Controller Specifications

Processor Speed	533 MHz
Memory (Standard/Maximum)	512 MB/1 GB RAM
Hard Disk Drive	320 GB (optional)

Maximum Stored Documents	950 files (HDD required)
Maximum Stored Pages	9,000 pages (HDD required)
Connection Type	Standard: Gigabit Ethernet (1000/100/10BASE-T), USB 2.0, USB 2.0 Host, SD Card Slot Optional: IEEE1284, IEEE802.11a/b/g/n Standard: PCL6/5e, Adobe® PostScript®3*, PDF Direct Optional: IPDS*, XPS
Printer Languages	PCL6: 45 fonts, PCL5: 45 fonts + International fonts 13 fonts, PostScript3: 136 fonts, IPDS: 108 fonts (optional)
Font Support	TCP/IP (IPv4, IPv6)
Network Protocols	Windows XP/Vista /7/8/8.1/Server2003/2008/2008R2/2012/2012R2, MacOS (X10.5 or later) PS only; UNIX filters for Sun Solaris, HP-UX, Red Hat Linux, SCO OpenServer, IBM AIX; SAP R/3; Citrix Presentation Server 4.5/Citrix XenApp 5.0, 6.0, 6.5; IBM iSeries/AS/400*
Supported Operating Systems	@Remote, SmartDeviceMonitor, Device Manager NX, Web SmartDeviceMonitor, Web Image Monitor
Device Management Utilities	

*Hard disk drive and optional memory required.
**IPDS option required.

Print Features

Scheduled Print*, Auto Continue, Store and Skip Errored Job, Classification Code, PDF Direct Print, Sample/Hold/Store and Locked Print*, Unauthorized Copy Prevention, Poster Print, Collate, Toner Saving Mode

*Hard disk drive required.

Controller Options

Hard Disk Drive Option	Part # MX407348RA
Type P1	
Memory Unit Type N1	Part # 007150MIU
1.0GB	
Browser Unit Type P1	Part # 407497
IPDS Unit Type P1	Part # 407349
XPS Direct Print Option	Part # 407351
Type P1	
VM Card Type W	Part # 407218
IEEE802.11a/b/g/n	Part # 407113
Interface Unit Type O	
IEEE 1284 Interface	Part # 411699
Board Type A	

Security Features

Administrator and User Authentication*, User Lockout, Auto Logout, Menu Protect, Data Encryption (Address Book/User Authentication Information/Job Logs/Temporary Stored Document/Network Interface Settings/System Settings), Network Security via TCP/IP Access Control, Encrypted communications using SSL/TLS, IPsec, or IEEE 802.1X; SMNPv3, IPP Authentication, Kerberos Authentication Encryption, Wireless LAN Security (WEP, WPA2/WPA2-PSK), Protect document data with Locked* and Stored Print*, Unauthorized Copy Prevention, Compulsory Security Stamp, HDD Data Overwrite* and Encryption*

*Hard disk drive required.

Hardware Options

Paper Feed Unit PB1060	Part # 407230
Paper Capacity	250 sheets
Supported Paper Sizes	3.94" x 5.82" – 8.5" x 14" (100 x 148 – 216 x 356 mm)
Supported Paper Weights	14 – 43 lb. Bond/90 lb. Index (52 – 162 g/m ²)
Dimensions (WxDxH)	14.6" x 15.4" x 3.7" (370 x 392 x 95 mm)
Weight	9.04 lb. (4.1 kg)

Paper Feed Unit PB1070	Part # 407229
Paper Capacity	500 sheets
Supported Paper Sizes	3.94" x 5.82" – 8.5" x 14" (100 x 148 – 216 x 356 mm)
Supported Paper Weights	14 – 43 lb. Bond/90 lb. Index (52 – 162 g/m ²)
Dimensions (WxDxH)	14.6" x 15.4" x 4.9" (370 x 392 x 125 mm)
Weight	9.92 lb. (4.5 kg)

Adjustable Height Cabinet Type G	Part # 161200
----------------------------------	---------------

Supports all SP 4520DN configurations

Dimensions (WxDxH)	17.8" x 19.4" x 21.7" (453 x 491.5 x 552 mm)
Weight	42 lbs.

Consumables & Yields

	Yield	Part #
Print Cartridge MP401	10,400 pages*	841886

*6% coverage, 3 pages/job. Actual yields may vary based on types of images printed and other factors.

The Ricoh SP 4520DN ships with starter toner that yields 10,400 pages (6% coverage, 3 pages/job).

For maximum performance and yield, we recommend using genuine Ricoh parts and supplies.

Specifications subject to change without notice.

RICOH
imagine. change.

www.ricoh-usa.com

Ricoh Americas Corporation, 70 Valley Stream Parkway, Malvern, PA 19355, 1-800-63-RICOH
Rico® and the Ricoh Logo are registered trademarks of Ricoh Company, Ltd. All other trademarks are the property of their respective owners. ©2015 Ricoh Americas Corporation. All rights reserved. The content of this document, and the appearance, features and specifications of Ricoh products and services are subject to change from time to time without notice. Products are shown with optional features. While care has been taken to ensure the accuracy of this information, Ricoh makes no representation or warranties about the accuracy, completeness or adequacy of the information contained herein, and shall not be liable for any errors or omissions in these materials. Actual results will vary depending upon use of the products and services, and the conditions and factors affecting performance. The only warranties for Ricoh products and services are as set forth in the express warranty statements accompanying them.

R3515-1

