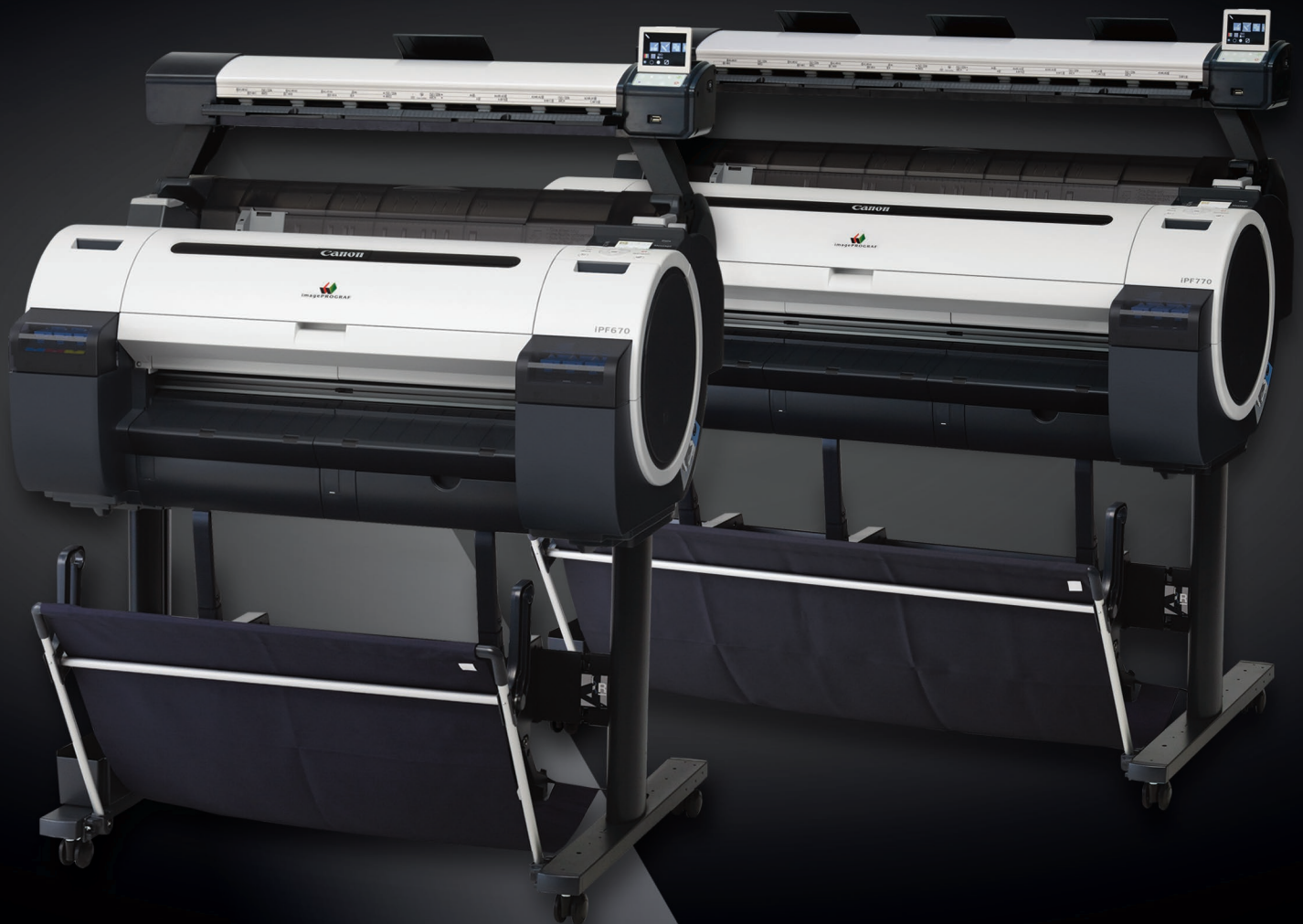


Canon
SEE IMPOSSIBLE

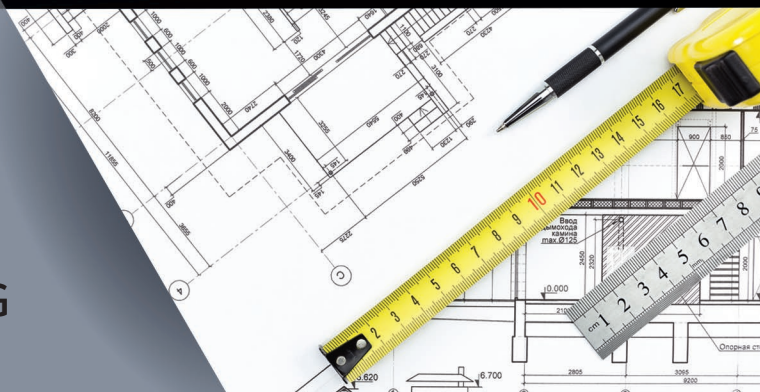
 **imagePROGRAF**
iPF770 MFP L36/iPF670 MFP L24

 **SCAN-TO-COPY/FILE**



**TECHNICAL
DOCUMENTS**

MFP LARGE-FORMAT IMAGING





Introducing the new, entry-level Multifunction Printers: imagePROGRAF iPF770 MFP L36 and iPF670 MFP L24 Large-Format MFP systems

Affordable and easy-to-use, scan-to-copy/file Multifunction Printer solutions (MFP)



Designed for the low-volume and entry-level user, these MFPs offer easy-to-use, scan-to-copy/file solutions for architects, engineers, consulting firms, small offices, and K-12 schools that require a minimal learning curve when it comes to new equipment.

FEATURES

Scanner

- The 36-inch L36 scanner weighs approx. 16.2 lb. and the 24-inch L24 scanner weighs approx. 12.2 lb.; both are lightweight and compact
- Easy-to-use control panel with easy-to-identify picture identification function
- SingleSensor Scanning Technology

Simple Operation

- “Green Button” scan-to-copy functionality
- No PC required

Easy Installation

- Scanner is easily integrated with the printer
- Compact MFP takes up minimal office space

Printer

- iPF670 24-inch and iPF770 36-inch models
- 5-color dye/pigment reactive ink set

At a low cost, small office environments and schools can now purchase an MFP.

SCANNER

These scanners, utilizing SingleSensor Technology,* have simple, integrated control panels that allow users to operate the scanner with a simple push of a button. This technology helps provide consistent and better color accuracy with more detail in the shadows and highlights than a staggered CIS array scanner.

- Scan-to-Copy
 - Three quality modes: Draft, Standard, and Best
 - Settings include Auto Crop Borders, number of copies, Brightness, Black Point, and White Point
 - Optical resolution of up to 600 dpi
 - Media thickness up to .5 mm
- Scan-to-USB
 - Scan-to-TIFF file format
- Scan-to-Network**
 - Scan-to-TIFF/JPEG/PDF file formats

PRINTER

The iPF770 MFP L36 includes a 36" scanner and printer; the iPF670 MFP L24 includes a 24" scanner and printer.

- 5-Color dye/pigment reactive ink system
- 130 ml ink tanks
- Economy Print mode
- Sub-ink tank system

SOFTWARE AVAILABLE

imagePROGRAF Print Utility:*** This iOS-based app allows users to print PDF files wirelessly, directly from an iPad® to an imagePROGRAF printer.

Direct Print & Share:† Canon's cloud portal solution allows for the sharing and batch printing of JPEG, TIFF, PDF, and HP-GL/2 files from almost anywhere in the world. Also, shortcut printing capability has been added for drag-and-drop printing.

PosterArtist Lite: Poster creation software gives you all the tools needed to design and output impressive, large-format signs and banners (PC only).

Print Plug-in for Microsoft® Office: Allows for users of any skill level to print posters or banners directly from Microsoft Excel®, PowerPoint®, and Word.

Accounting Manager: This management tool easily helps track costs and allocate consumable expenses to projects. It also allows you to track print jobs by user to calculate ink and media (PC only).



iPF670 MFP L24



iPF770 MFP L36

* SingleSensor Technology Assembly means that multiple sensors are contained in one assembly device.

** Minimum PC specification: Windows 7/8 - 32-bit/Intel Celeron, Core-Duo, Core-2-Duo or 2.8 GHz Hyper-Threading (HT) or AMD Dual-Core processors/2 GB RAM/High speed 7,200rpm Serial ATA (SATA) HDD with minimum 2 GB for applications and 20 GB free for images.

*** Available on App Store™. Compatible with iPad 2 or later, running iOS 6.1 or later. Data charges may apply. Printed output will be same size as original file. Mobile device and large-format printer must utilize the same network. Printer must be connected to the same router that mobile device is connected to via wireless capability. Wireless performance may vary based on terrain and distance between the printer and wireless network clients. In order to print from imagePROGRAF Print Utility, user must open their PDF file in another, supported iPad app. Then, the user would select "Open in" and choose the print utility app.

† Direct Print & Share comes embedded with the imagePROGRAF iPF770 MFP L36 and iPF670 MFP L24 large-format printers, and is also available as a free download at <http://usa.canon.com/downloads>. You must sign up for the Google™ service separately. This service is subject to Google's terms and conditions. Based on Google's current services. Subject to change at Google's discretion.

PRINTER

Print-Head

PF-04

Technology

FINE (Photolithography Inkjet Nozzle Engineering)

Print Resolution (Max.)

2400 x 1200 dpi

Line Accuracy*

±0.1% or Less

Minimum Line Weight**

0.02 mm

Number of Nozzles

Matte Black: 5,120 Nozzles

Other Colors: 2,560 Nozzles per Color

Droplet Size

4 Picoliter

Nozzle Pitch (Head Resolution)

1200 dpi x Two Rows

Print-Head Swath

1.07 inch

Ink Type

Dye: Cyan (C), Magenta (M), Yellow (Y), Black (BK)

Pigment: Matte Black (MBK)

Ink Tank

PFI-107: C, M, Y, BK, MBK

Ink Tank Capacity

Starter: 90 ml

Replacement: 130 ml

Ink Supply Method

Tubing System with Sub-ink Tanks for Continuous Ink Supply

Media Thickness

0.07 – 0.8 mm (2.8 – 31.4 mil)

Media Core Sizes

2" and 3" Core (Adapter Included)

Maximum Roll Outer Diameter

5.9" (150 mm)

Output Media Bin

Basket

Printing Software

imagePROGRAF Printer Driver for Windows®/Mac®, Printer Driver Extra Kit for Windows/Mac [Free Layout, Color imageRUNNER® Enlargement Copy (PC only), Advanced Preview], Print Plug-in for Microsoft Office (PC only), Optimized Module for AutoCad® for Windows, Direct Print & Share (PC only), Status Monitor for Windows, Print Monitor for Mac, Media Configuration Tool, PosterArtist Lite for Windows

Operating System

Windows XP (32-bit), Server 2003 (32/64-bit), Server 2008 (32/64-bit), Server 2012, (64-bit), Windows Vista® (32/64-bit), Windows 7 (32/64-bit), Windows 10 (32/64-bit), Macintosh OS X 10.6.8-10X

Print Language

GARO (Canon Proprietary), HP-GL/2, HP RTL

Interface

USB 2.0 Hi-Speed, 10/100/1000Base-T/TX

Power Supply

AC 100–240V (50-60Hz)

Power Consumption

Maximum: 140 W or Less

Standby: 5 W or Less

Power Off: 1 W or Less (Executive Order Compliant)

Certifications

Electrical Safety Regulations

TUV (USA), cTUV (USA), TUV.S mark, CB certification (Others)

Electromagnetic Interface Regulations

FCC Class B (USA), IC Class B (Canada)

Environmental Certifications

ENERGY STAR® (Worldwide)
RoHS Directive

Operational Environment

Temperature: 59 – 86 °F (15 – 30 °C)

Relative Humidity: 10 – 80% (No Condensation)

Dimensions (H x W x D) and Weight with Stand, Basket and Scanner

iPF770

52" x 51" x 34" (ST-33: with basket open)

Weight: 157.2 lb. (ST-33, roll holder included, no inks, no print-heads)

iPF670

52" x 39" x 34" (ST-26: with basket open)

Weight: 130.2 lb. (ST-26, roll holder included, no inks, no print-heads)

Options

PosterArtist

iPF770: Roll Holder Set (RH2-33)

iPF670: Roll Holder Set (RH2-26)

User-Replaceable Items

Ink Tank (PFI-107 MBK, BK, C, M, Y)

Print-Head (PF-04)

Maintenance Cartridge (MC-10)

L SERIES SCANNER

Scan Speed***

24-bit Full Color @ 200 dpi: 1" (per second)

8-bit Grayscale and Monochrome @ 200 dpi:

3" (per second)

Scan Modes

16.7-million Color RGB (24-bit)

256-level Grayscale (8-bit)

Color Space

Normalized RGB

Resolution

600 dpi (optical)

Scan Accuracy†

+/- 0.2%

Maximum Image Width

L24: 24"; **L36:** 36"

Maximum Media Width

L24: 26"; **L36:** 38"

Maximum Scan Length

50"

Maximum Media Thickness

0.020" (.5 mm)

Digital Imaging Technology

Contact Image Sensor (CIS) Technology (SingleSensor Technology Assembly)

- Full width SingleSensor CIS Assembly
- 24-bit RGB digital color image capture
- 8-bit grayscale image capture
- Panchromatic monochrome and black and white
- Bi-directional extra long-life LED light system for optimum object illumination and instant-on scanning capability

Scanner Interface

Scan to USB - USB2 interface

(Flash drive max. size = 128 GB - FAT32)

Copy/Scan to Network - Ethernet interface

(1 GB Ethernet connection for network configuration)

Operating Environments

10 – 35°C, 35-80% RH, Non-condensing

External Power Supply

100-240 VAC Autosensing +/- 10%, 50-60 Hz

Scanner Power Consumption

• 19.40 W (Scanning)

• .05 W (Stand-by)

Compliances

CB, CE, FCC, UL, ENERGY STAR®, ICES-003, CUL, S Mark

Dimensions (with Paper Tray Extended)

Height: L24, 5.2" / L36, 5.2"

Width: L24, 36.8" / L36, 48.7"

Depth: L24, 9.7" / L36, 9.7"

Stand and Scanner Weight

L24: Approx. 12.2 lb.

L36: Approx. 16.2 lb.

What's In The Box?

- L Scanner with Power Cord
- 2 Meter Ethernet Cable
- 2 Mounting Brackets
- CD for L Scan App Software
- L Scanner Guide
- Document Return Guide
- Scale Factor Stickers
- Calibration Target

* Line accuracy repeatability is guaranteed after a user performs necessary adjustment and under the same environmental conditions. Applies to media for line drawing (Plain Paper, Coated Paper, CAD Translucent Matte Film, and CAD Tracing Paper) only.

** Theoretical value based on data resolution.

*** The scan rate is proportional across the full range of resolutions supported by the scanner. Quoted top speeds may be limited by the effective bandwidth of the USB 2 and is not guaranteed for all media types.

† The quoted scan accuracy may vary depending on the operating environment and the thickness of the media.

USA.CANON.COM/LARGEFORMAT



As an ENERGY STAR partner, Canon U.S.A., Inc. has certified these models as meeting the ENERGY STAR energy efficiency criteria through an EPA recognized certification body. ENERGY STAR and the ENERGY STAR mark are registered U.S. marks. Canon, imagePROGRAF, imageRUNNER, and the GENUINE logo are registered trademarks of Canon Inc. in the United States and may also be registered trademarks or trademarks in other countries. All other referenced product names and marks are trademarks of their respective owners. Specifications and availability subject to change without notice. Not responsible for typographical errors.
©2016 Canon U.S.A., Inc. All rights reserved.

0200W427

0216R-iPF770MFP L36/iPF670MFP L24-10M-DIH

